

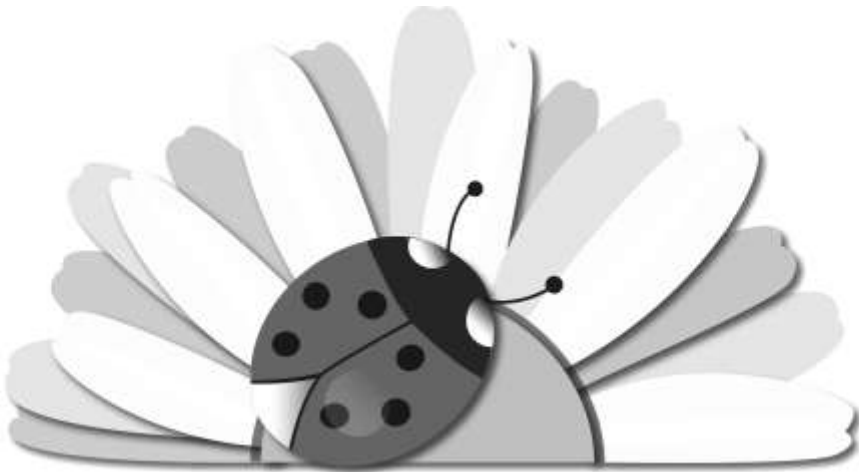
“The Rock”

UPON THIS ROCK COOPERATIVE PARISH

Beth Eden — Harlem — Evans

Open Hearts-Open Minds-Open Doors

Visit our web page at: www.utrcp.org



August

2011

VOL 55

ISSUE 8

Pastor Doug's Home Phone: 815.877.4102
E-mail: dqb@utrcp.org

Pastor Eric's Home Phone: 815.282.1340
E-mail: eblachford@utrcp.org

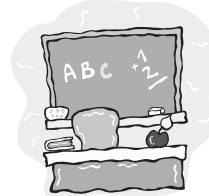
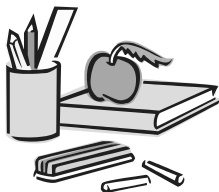
THE CO-OP

BETH EDEN UNITED METHODIST CHURCH
3201 HUFFMAN BLVD.-ROCKFORD, IL 61103
PHONE: 815.877.9237- FAX: 815.877.8736
E-MAIL: BETHEDEN@UTRCP.ORG
WEB PAGE: www.utrcp.org
SECRETARY: Sherry Severing
TRADITIONAL WORSHIP: 8:30 a.m.
SUNDAY SCHOOL: 9:50 a.m., for all ages
MODERN WORSHIP: 10:45 a.m.
CHURCH OFFICE HOURS: 8:00 a.m. until 4:00 p.m., Tues. thru Fri.



HARLEM UNITED METHODIST CHURCH
8401 N. ALPINE RD.-MACHESNEY PARK, IL
PHONE: 815.633.1450- FAX: 815.633.1450
EMAIL: HARLEM@UTRCP.ORG
SECRETARY: Mary Sue Wright
SUNDAY WORSHIP: 10:30 a.m.
CHURCH OFFICE HOURS: 8 a.m. until 11:45 a.m., Tues thru Fri.

EVANS UNITED METHODIST CHURCH
7605 N. SECOND ST.-MACHESNEY PARK, IL
PHONE: 815.633.4411
E-MAIL: EVANS@UTRCP.ORG
SECRETARY: Mary Sue Wright
SUNDAY WORSHIP: 8:30 a.m.
CHURCH OFFICE HOURS: 12:00 noon until 4:00 p.m., Wed thru Fri.



SENIOR PASTOR: Rev. Douglas Q. Bowden
ASSOCIATE/YOUTH PASTOR: Pastor Eric Blachford

Harlem & Evans Church Council will meet on the 2nd WEDNESDAY of the Month,
Harlem @ 5:00 p.m. & Evans @ 7:00 p.m.
Beth Eden Church Council will meet the 3rd WEDNESDAY of the Month @ 6:30 p.m.

MISSION STATEMENT

*Beth Eden is a welcoming and passionate congregation,
committed to sharing the love of God,
the grace of Jesus Christ, and the unity of the
Holy Spirit, with all people everywhere.*



Pastor Doug's Dialogue.....



Dear Members and Friends of Beth Eden, Evans, and Harlem Churches:

We welcome Pastor Mark Meyers to our three churches on Sundays, August 7 and 14. Mark is Pastor of the New Life United Methodist Church, located in the Hilltop Ministry Center, 8301 Mitchell Road, Loves Park. Pastor Mark was ordained as Elder and Full Member of the Northern Illinois Conference, in June, at St. Charles. He was appointed to Roscoe United Methodist Church as Associate Pastor, along with Senior Pastor Paul Meyers, in July, 2010. Pastor Eric and I rejoice in Mark, as colleague and good friend.

Pastor Mark will preach and be celebrant for Holy Communion, at Evans and Harlem Churches on Sunday morning, August 7th. On that same Sunday, Pastor Eric will preach and be celebrant for Holy Communion, in Beth Eden Church. May God bless this day!

Pastor Mark will preach in Beth Eden on August 14th. Pastor Eric and our great Co-Op youth will share their Summer Work Trip in Evans and Harlem on Sunday, August 14.

Pastor Mark brings to us, in our worship and fellowship, on these first two Sundays of August, this particular vision for new ministry. Hilltop Ministry Center, established in 2004 and its building completed in 2007, has now a new name. Its new name is "New Life United Methodist Church." As its pastor, Mark will share this vision of ministry with us.

New Life United Methodist Church will begin to worship, Saturday evenings, 5:30 p.m., on October 1st. Pastor Mark and our friends in New Life Church need our help to begin this new day and time of worship. So, Pastor Mark will invite us to come and worship with the New Life congregation on Saturday evenings. This would be, of course, in addition, to our every Sunday morning worship in Beth Eden, Evans, and Harlem churches.

New Life United Methodist Church is committed to our United Methodist Connection. Eager to help and welcome sister United Methodist Churches, to its building, at any time, for meetings and gatherings, Pastor Mark is grateful for this opportunity to be with us. **We pray God's fullest blessings on New Life UM Church and Pastor Mark Meyers.**

Upon This Rock Co-Operative Parish is 8 years old. So, let us celebrate 8 years of faithful and excellent ministry together, as Harlem, Evans, and Beth Eden Churches. Thanks be to God!

Sunday, August 28, 10:00 a.m.

Worship, One Service Together, in Beth Eden Church

Theme: “The 8th Day, Celebrating 8 Years of Ministry”

Pastors Doug and Eric, leading our Service of Worship. Preaching on this theme. Sacrament of Holy Communion

Co-Op Choir, of our three congregations, singing together. Music Ministers, Jarrod Severing, Barb Fisher-Livingston, and Steve Pearce, directing and providing accompaniment.

AND AFTER OUR WORSHIP

Potluck Lunch, in Beth Eden Fellowship Hall, for all.

We United Methodists love Potlucks and being together.

Please bring a dish to pass and your own table service. Beverages will be provided. This will be a great time!

Thanks be to God for 8 years of UTRCP Ministry!!!!!!!

Ministry in Harlem Church

Prayer is our good friend in this present time of ministry in Harlem Church.

One real blessing of our congregational meeting, July 13th, was when Pastor **Eric asked us to remember what happened that we “fell in love” with Harlem Church.** Our sharing was special and moving many of us to tears and smiles.

God gives us the present time, summer and fall of 2011 and in the new year, winter and spring of 2012, to make a decision for our future ministry. We are thankful for the prayers and loving support of Evans and Beth Eden in the Co-OP in this time, between now and June 30, 2012. God bless us all!!!!!!

Pastor Jason Kim and New Hope Korean Congregation invite their friends in Harlem Church to a service of worship and celebration on Saturday evening, August 20, 6:00 p.m. Pastor Doug will give a short homily in the service. We are grateful for this gracious invitation. New Hope has been worshipping in Harlem Church since February, 2006. We are growing together in this time.

Ministry in Evans Church

Two ministry notes, which bring great joy to all of us in Evans Church.....

1. Tony Valdez celebrates his 91st birthday on August 19th. Tony is a great wood carver, especially the wood carving of Moses, in our fellowship area. So, Pastor Doug will preach on Moses, on Sunday morning, August 21st and **we will celebrate Tony’s wood carving ministry as blessing for us.**
2. Laura and Jon Zigrang, new Missionaries of Evans Church, are going to be with us on Sunday morning, September 18th. Laura and Jon will share with us their call to Oman, in the Arabian Peninsula, hopefully, beginning in January, 2012. May God bless our day, with Laura, Jon, Jack, Megan, Adam.

Ministry in Beth Eden Church

“On the Waterfront” Festival is Friday, September 2, Saturday, September 3, and Sunday, September 4. Maybe, with the high cost of gas, this might be a big year of attendance. Families staying home & coming to the “Waterfront.”

So, we will be ready with “Curds for Christ,” the great Beth Eden tradition. Along with our famous Cheese Curds are our pork sandwiches, cool beverages, lemonade and water, and the famous hospitality of Beth Eden smiling people.

Lisa Jepsen and Ray Covert are Co-Chairs. They have really enjoyed helping and working several shifts in the last three years. So, we have asked them to be our new Co-Chairs, on behalf of Beth Eden Church Council, who is sponsor this 2011 year. Lisa and Ray are excited and a little nervous, too, about all there is to do, in both preparations and the full three days of the booth.

So, let’s give Lisa and Ray, great support! Signup board, for days and times, will be in Eden Hall, on Sundays, August 7, 14, 21, and 28. Organizational meeting will be Wednesday, August 24, 6:15 p.m., in Eden Café. Waterfront Passes will be given out. We will fire each other up and be ready to go!!!!

AND

Hand Bells, two octaves, will be arriving in mid-August from Malmark company. First practices of our new Hand Bell Choir will be in early September. Music & all needed supplies are being ordered by Jarrod Severing, Hand Bell Choir Director.

Hand Bell Choir will play for the first time on All Saints Sunday, November 6th. Please join our Hand Bell Choir. All you need is to count & joyfully play the bells.

AND

Sunday, November 20, Miracle and Commitment Sunday. We pray for God to give us a Miracle of \$25,000 for Capital Projects and Apportionments payment in 2011.

Ministry and Care Across the Co-Op Churches

Nurture and Membership Care Team is a part of the ministry of Beth Eden Church.

One of the important health and ministry care resources that the team feels is so very important to share across the Co-OP is **“Emergency Home Response Providers.”**

We have learned, in recent years, how important this health and care resource is.

One lives by oneself. One needs to have a way of calling for help if say, one falls on the floor and is not able to get up or move. This is where the call for help is essential.

Lifeline, 800-368-2925, is one of the health care companies, that provides this service.

So, if you live alone, please talk with Lifeline and receive from them a “lifeline” to call for emergency help. May the ones of us, in our three churches, who already have a “lifeline” give encouragement and help to any who might questions or need help.

Home Serving of Holy Communion in our Co-Op Churches

We are asking for help, here. If you would like to receive Holy Communion at home, for either one of our pastors or a lay person, please let us know. Evans and Harlem congregations, please call Mary Sue Wright, in the Harlem office, 815-633-1450 or in the Evans office, 815-633-4411 or Sherry Severing, in Beth Eden office, 815-877-9237

We are grateful for our Communion Stewards in each of our churches. They will prepare the communion elements for serving at home. Ruth Plock and Jean Steckling are at Beth Eden. Cindy Drake is at Evans. Ruth and Lynn Love are at Harlem.

CD's of our worship services are available. If you would to receive a CD, each week of our Sunday morning services, please also call the office or let us know.

We pray for these ways of bringing Sunday morning worship into our homes.



In Memoriam

We will print the names of members and active constituents/friends in our Beth Eden, Evans, and Harlem Churches who have passed on during the times between ROCK Newsletters.

We print the names of beloved sisters & brothers in Christ and give thanks for their lives. Each of their lives and ministries is a great blessing and cherished memory for each of us.

Here are the names of persons who have died since June 29, 2011:

Curtis Chrisman (*Evans*) September 23, 1919 ~ June 27, 2011
Brother-in-law of Harry & Peggy Halberstadt

Ernest L. Rost (*Evans*) September 4, 1924 ~ July 2, 2011
Step-Father of Mary Jo McCracken

Fern Burns (*Beth Eden*) March 15, 1921 ~ July 15, 2011

Warren Tudor (*Beth Eden*) August 8, 1932 ~ July 22, 2011

“Blessed are the dead who die in the Lord. Yes, says the Spirit, they will rest from their labors for their deeds follow them.”

Revelation 14:13





August 2011



Sunday School in August

Summer Sunday School



- ◆ August 7th ~ We will talk about "Braces and Wheelchairs". Students will identify why some people use braces and wheelchairs.
- ◆ August 21st ~ Will be our Hop-a-Thon Event! Students will identify why they are hoping.

There are donation forms available in Eden Hall or you can go to <https://www.joinmda.org/rockfordhop11/BethEdenUMCRockford> to make your donation! All donations received will be split between the kids participating in the Hop-A-Thon. Thank you for your support!!



Sunday School Rally Day

Rally Day will be September 11th
at 9:50 a.m. Be watching for more information.

Remember, Sunday School is for ALL ages!



Sincere thank you to all who participated or volunteered in any way, shape or form! Without everyone's help, VBS would not have been as fantastic as it was! Thank you also for the congregational support. Our wonderful church family always comes through when help is needed. Bravo Beth Eden!!!!

We had approximately 33 children who actively joined in “Shake It Up”. There were volunteers every night who took care of the crafts, games, storytelling, discovery time, and the opening and closing parts of the evening.

A very special thank you to Darlene Scott and her helpers for preparing the simple supper each night. The meals were wonderful!

And with gratitude and thankfulness for Megan Church & Kelcey Kast for all their hard work and dedication in pulling off VBS. So much time goes into planning VBS and they do it with gladness and a smile! Thank you ladies for all your hard work and dedication. The decorations were outstanding!!!

And finally, thank you to everyone who brought in non-perishable food items. We collected 65 food items that will be donated to the local food pantry.

All I can now say, if someone calls on you to be a part of VBS next year...do not hesitate to say...YES! You will not regret being a part of these precious children's lives!

Thanks again,
VBS Committee



**THANKS to Our
VBS Volunteers!**





Music & Worship Notes

Summer Music Schedule!

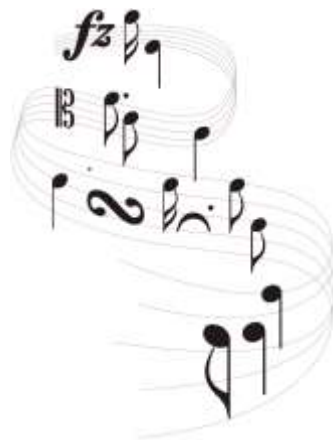
I am still looking for volunteers for special music during the summer. There are not many Sundays left to share your talents. The summer worship music schedule is up by the piano in the sanctuary and ready for your signature! Please sign up or let me know if you would like to share music this summer.

New opportunities in Music!

As this fall approaches, keep your schedules open to some of the new opportunities that are coming in the music ministry at Beth Eden. Children' Choir, Chancel Choir, Beth Eden Belle's Choir, 90 & 9 Praise Team and our new, yet to be named Hand Bell Choir Ministry. There are plenty of opportunities to get involved with your church's worship ministry. Talk to me, let me know if there is something else you would like to see. The door is always open to new ideas. Let's get everyone involved in the outreach and ministry of Beth Eden UMC.

Worship Help Needed!

I am also looking for individuals to help out during modern worship with the visuals on the "big screen." I am willing to train anyone who is interested in running the presentations for this service. See me or call me at 815.378.7754 to let me know if you are interested.



In Christ's Love,

Jarrood Severing

180 Minutes!

R

U

Inn?



December 4, 2011

1:00-4:00 p.m.

See Jarrod Severing if you have any questions,
or he will see you!



Evangelism and Loss: A long term commitment

Isaiah 41:10, 13

*Fear thou not, for I am with thee, be not dismayed, for I am thy God. I will strengthen thee, yes, I will help thee; yea, I will uphold thee with the right hand of **my righteousness...For I the Lord, thy God will hold thy right hand, saying unto thee, Fear not, I will help thee.***

*When we know of someone who has lost someone or something, such as the death of a **family member, a miscarriage, a pet's death, a job, it is a devastating process toward healing.** We tend to want to rush out and send flowers, a casserole and a card. But what we tend to forget is that the person who has lost something or someone suffers and struggles well after the initial devastation of the loss. There is no time limit to how long it takes to heal. And there should be no time limit to how long we show care and concern for the person experiencing the loss.*

*You may want to do all the immediate things that people do in these events, such as **presenting a casserole, but don't forget the aftermath too. After the initial loss is over, and after everyone else has gone on with their lives, don't forget that the mourner is still alone and struggling...they may even be losing touch with God. Why not save some of the casseroles, cards and comfort for later too. Mourners tend to turn down invitations to do things immediately after the process, and when they are finally ready to do something, quite a few people are done inviting. Don't give up on them. Let them know that someone out there is still thinking, praying and caring about them.***

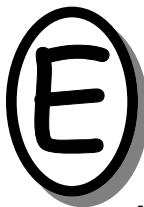
Most importantly, don't forget to pray for the person's healing. Remind them of God's presence in their journey to accept a loss. It is easy to lose comfort in God when something horrible is happening. Remind them that God is still there for them. There is still a plan for them, and you will be with them, no matter how long it takes, to help them figure out what that new journey is.

JOLLY BETH EDEN SENIORS



The Jolly Beth Eden Seniors will meet on Wednesday, August 24 at 12:00 noon for a potluck meal. The program will be presented by Randy Roberson telling us the work being done by Stepping Stones of Rockford. Bring your table setting and a dish to pass. . As always, people from all three Churches are welcome.

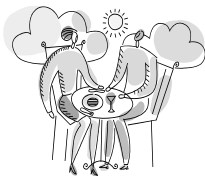
EDENETTES CIRCLE



Elaine McDuell and Carol Klinkhammer are the August refreshment hostesses and program leaders for the Edenettes Circle. We will meet at 12:30 p.m. in the Youth Room on Thursday, August 11, 2011. The program will be about **“Human Trafficking”** which is a serious problem even in our country. Come and learn!

Each month items for the Carrie Lynn Center and the food pantries are encouraged. Guests are warmly welcome!

SOMETHING NEW!!!



How can we take our church beyond our four walls? For starters, Eden Café will be held outside on Sunday, August 22! Plan to enjoy inspiration, fellowship, information, and learning! You might prayerfully consider inviting a friend to join you in worship that morning!

-Evangelism Team

YELLOW - AS IN “SCHOOL BUS YELLOW” IS THE COLOR!



The United Methodist Women are promoting School Safety as the new school year is about to begin. On Sunday, August 14, everyone is encouraged to wear something yellow as a reminder to be aware of our children and the school busses they ride. If not a garment, perhaps a scarf or jewelry. Be watching for some helpful information.

Purpose: To honor Gods gift of our bodies and to practice good stewardship of them. “I thank you, High God - you’re breath taking! Body and soul, I am marvelously made!” (Psalm 139:14 - The Message)

The United Methodist Women

KITCHEN UPDATING



In memory of Anna Mae Baarstad, who spent many happy years in charge of anniversary and funeral luncheons in the kitchens of St. Johns and Beth Eden Churches, the following will be done.

Accents on Wood (Don Highland) will replace all door fronts and drawers in the kitchen. He will also reface the present cabinets to match the new ones. He will finish the end panels and will replace and furnish new base for around the kitchen.

We will furnish all hardware and locks. New stoves (2) will be installed. They will be residential again because of the exhaust problems: no ongoing meals or hot grease frying is permitted. The kitchen floor will be cleaned and polished. The kitchen should be painted after the cabinets are installed.

Any suggestions, ideas or help will be appreciated.

Thanks,
Kathleen Walker (815-544-7174)

CRAFT/HOBBY ALERT!!!!



Tuesday, October 11, is the annual Fall Festival of Crafts & Talents presented by the United Methodist Women. Women, and gentlemen too, are invited to bring and share the treasures they create and collect, for an evening of fun and learning.

United Methodist Women



MEN'S BREAKFAST

There is a Men's Breakfast held at Evans UMC, 7605 N. Second, at 8:00 a.m., usually on the second Saturday of each month. The next one is Saturday, August 20th.

After the meal, approximately 9:00 a.m., we start a Bible Study for one hour. Any man (18 years or older) interested in attending please call David Burnside at (cell) 815.520.7509 or (home) 815.708.6983, so he can get a count.



ON THE WATERFRONT



30 pounds of sliced turkey; 50 pounds of BBQ pulled pork; 600 pounds of cheese curds (waiting to be deep-fried to perfection); 30 gallons of raspberry lemonade; 30 hours of serving; 50-60 volunteers serving the above; Setting up--tearing down; mighty men and mighty trucks.

All of the above are a fair assessment of what is needed for our booth at On The Waterfront. September 2-4 are the dates this year--same hours and same location. We need your help!!!! A sign up sheet will be available for shifts on August 1st in Eden Cafe. Reserve your favorite shift by getting your name up on the list. We have many "veterans" who help out, so if you haven't done it before, have no fear---we will make sure you have a "person with experience" to assist on your shift.

Any questions or comments or ideas, let us know. There will also be tickets available again at reduced prices at a mandatory meeting for all workers on August 24, 2011 at 6:15 p.m.

Again, be sure to watch for the sign up info. Thanks a bunch.

We need lots of Raspberry Kool-Aid packages--around 100. Further donations list will be available soon.

Darlene Scott, Ray Covert and Lisa Jepsen
Co-Coordinator OTW, (Church Council sponsored)



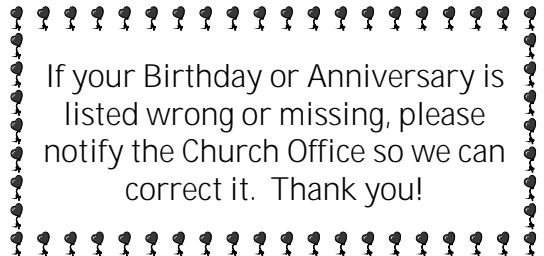


- | | | | |
|----|----------------------|----|-----------------------|
| 2 | Sigourney Keller | 28 | Charlotte Russow |
| 4 | Angie White | | Cindy White |
| 5 | Alexi Zavadil | 29 | Zachary Schandelmeier |
| 7 | Vicki Porter | | Conner Lamm |
| | Mary Jo Lafferty | 30 | Susan Alderman |
| 8 | Ryan McCarty | 31 | Mindi Hatch |
| | Seth Schwirblat | | Logan Kast |
| 10 | Robert Alderman | | |
| | Rich Sutliff | | |
| 13 | Pauline Swanson | | |
| 15 | Janet Bennett | | |
| | Todd Scott | | |
| 16 | Adam Steward | | |
| 17 | Austin Brummett | | |
| 18 | Jonathan Emery | | |
| 20 | William Vanderheyden | | |
| 21 | Rhyanna Steede | | |
| | Dustin Moburg | | |
| 22 | Dolores Rundberg | | |
| | Ken Sanders | | |
| | Alex Tudor McDonnell | | |
| 24 | Staci Luevano | | |
| | Mackenzie Parr | | |
| 25 | Isabelle Carlock | | |
| 27 | Cle Vance | | |
| | Dianne Young | | |
| | Helen Emerick | | |
| | Jennifer Gilson | | |
| | Wilbur Yeager | | |




- | | |
|----|----------------------|
| 12 | Mike & Karen Parr |
| 13 | Joe & Cindy White |
| 25 | Curt & Vivian Dull |
| 27 | Bill & Norma Kitchen |
| 31 | Rich & Beth Barrett |





 If your Birthday or Anniversary is listed wrong or missing, please notify the Church Office so we can correct it. Thank you!

Sunday	Monday	Tuesday	Wednesday																																										
AUGUST 2011																																													
<div style="border: 1px solid black; padding: 5px;"> <p style="text-align: center;">September 2011</p> <table style="width: 100%; border-collapse: collapse;"> <tr> <td style="text-align: center;">S</td> <td style="text-align: center;">M</td> <td style="text-align: center;">T</td> <td style="text-align: center;">W</td> <td style="text-align: center;">T</td> <td style="text-align: center;">F</td> <td style="text-align: center;">S</td> </tr> <tr> <td></td> <td></td> <td></td> <td></td> <td style="text-align: center;">1</td> <td style="text-align: center;">2</td> <td style="text-align: center;">3</td> </tr> <tr> <td style="text-align: center;">4</td> <td style="text-align: center;">5</td> <td style="text-align: center;">6</td> <td style="text-align: center;">7</td> <td style="text-align: center;">8</td> <td style="text-align: center;">9</td> <td style="text-align: center;">10</td> </tr> <tr> <td style="text-align: center;">11</td> <td style="text-align: center;">12</td> <td style="text-align: center;">13</td> <td style="text-align: center;">14</td> <td style="text-align: center;">15</td> <td style="text-align: center;">16</td> <td style="text-align: center;">17</td> </tr> <tr> <td style="text-align: center;">18</td> <td style="text-align: center;">19</td> <td style="text-align: center;">20</td> <td style="text-align: center;">21</td> <td style="text-align: center;">22</td> <td style="text-align: center;">23</td> <td style="text-align: center;">24</td> </tr> <tr> <td style="text-align: center;">25</td> <td style="text-align: center;">26</td> <td style="text-align: center;">27</td> <td style="text-align: center;">28</td> <td style="text-align: center;">29</td> <td style="text-align: center;">30</td> <td></td> </tr> </table> </div>	S	M	T	W	T	F	S					1	2	3	4	5	6	7	8	9	10	11	12	13	14	15	16	17	18	19	20	21	22	23	24	25	26	27	28	29	30		<p>1 2:30 pm-Girl Scouts #3154 6:00 pm-Men's Softball- Diamond 7 (Sportscore) 7:00 pm-Boy Scouts #2 7:00 pm-Girl Scouts #3575 Work begins on kitchen Cabinets _____ Pastor Doug & Mary on Vacation _____</p>	<p>2 7:00 am-Men's Prayer Group 1:00 pm-Nurture & Membership 6:00 pm-Lifematters 7:00 pm-Cyber Team</p>	<p>3 6:30 pm-Fina</p>
S	M	T	W	T	F	S																																							
				1	2	3																																							
4	5	6	7	8	9	10																																							
11	12	13	14	15	16	17																																							
18	19	20	21	22	23	24																																							
25	26	27	28	29	30																																								
<p>7 Communion/Pantry 9:50 am-Summer Sunday School</p> <p>Pastor Doug & Mary on Vacation _____</p>	<p>8 7:00 pm-Boy Scouts #2 7:00 pm-Girl Scouts #3575</p>	<p>9 7:00 am-Men's Prayer Group 6:00 pm-Lifematters 6:15 pm-Girl Scouts #3157 7:00 pm-Commission on Education</p>	<p>10 11:30 am-We Luncheon 6:30 pm-Chur 7:00 pm-Girl</p>																																										
<p>14 Guest Pastor will be Pastor Mark Meyers, New Life UMC (Hilltop)</p> <p>Pastor Doug & Mary on Vacation _____→</p>	<p>15 ROCK DEADLINE 2:30 pm-Girl Scouts #3154 7:00 pm-Boy Scouts #2 7:00 pm-Girl Scouts #3575</p>	<p>16 7:00 am-Men's Prayer Group 6:00 pm-Lifematters 7:00 pm-BS #2 Comm. Mtg. 7:00 pm-Staff Parish 7:00 pm-Trustees</p>	<p>17 6:30 pm-Chur</p>																																										
<p>21 9:50 am-Summer Sunday School MDA Hop-A-thon 6:30 pm-Summer Soul Fest @ Sinnissippi Band Shell</p>	<p>22 7:00 pm-Boy Scouts #2 7:00 pm-Girl Scouts #3575</p>	<p>23 7:00 am-Men's Prayer Group 6:00 pm-Lifematters 6:15 pm-Girl Scouts #3157</p>	<p>24 12:00 pm-Jol Seniors 6:15 pm-OTV Meeting for 7:15 pm-UTR</p>																																										
<p>28 10:00 am-Co-Op Anniversary Celebration @ Beth Eden (1 service) 11:30 am-Potluck in Fellowship Hall</p>	<p>29 2:30 pm-Girl Scouts #3154 7:00 pm-Boy Scouts #2 7:00 pm-Girl Scouts #3575</p>	<p>30 7:00 am-Men's Prayer Group 5:00 pm-Memorial Committee 6:00 pm-Lifematters</p>	<p>31</p>																																										

Wednesday	Thursday	Friday	Saturday
<h1>Beth Eden UMC</h1>			
ance	4 6:00 pm -Weight Watchers 6:00 pm-4th Day Group @ Evans	5	6
sley Willows rch Council Scout Leader Mtg.	11 12:30 pm-Edenettes 6:00 pm -Weight Watchers	12 9:30 am-UMWomen Mission Team Meeting	13
rch Council	18 6:00 pm -Weight Watchers	19	20 8:00 am-Men of UTRCP Break- fast & Bible Study 10:00 am Worship Summit (Harlem)
ly Beth Eden V Mandatory workers CP Ministry Team	25 9:30 am-Stuffers & Stickers 12:00 pm-Clergy Laity-Harbor Custer 6:00 pm -Weight Watchers	26	27
	<div style="border: 2px solid black; padding: 10px;"> <p><u>Worship Schedule</u></p> <p>8:30-9:30 am—Traditional Worship</p> <p>9:50-10:40 am—Summer Sunday School ~ 2nd & 4th Sunday</p> <p>10:45-11:45 am—Modern Worship</p> </div>		



WE LOVE OUR BETH EDEN BABIES AND TODDLERS

Not only do parents take vows as their baby is baptized, but we as a church family also promise that “with God’s help we will proclaim the good news and live according to the example of Christ..... surround the baby with a community of love and forgiveness.....and pray for them”. We have been so blessed with so many babies and toddlers!!

WHO ARE OUR BABIES?

Aleyse Mae Miller was born to Jennifer & Fred Miller on August 22, 2010. Proud grandparents are Kathy & Denny Berschneider and proud great-grandparents are Tony Kryzaniak.

Makayla Lynn Dally was born to Michael & Paula Dally on August 30, 2010. Proud grandparents are Rick & Selinda Karl and great-grandparents are Byron & Margaret Hutchins.

Charlie Ryan Shipton was born to Maren & Mark Shipton on September 13, 2010. Proud great-grandparents are Norma Shipton and Carol & Tony Kryzaniak.

Carter Patrick Abrahamson was born to Pat & Sarah Abrahamson on March 16, 2011.

Gwen Arabelle Vanderheyden was born to Russell & Carrie Vanderheyden on June 7, 2011 at 4:52 pm. She weighed 8 lbs. 10 oz. and 20-1/4” long. Proud grandparents are John & Roxanne Vanderheyden. Welcome Baby Gwen!!

The first years of a baby’s life are full of anticipated “milestones” of development and learning and toddlers are full energy and doing new things every day and we want to make this a monthly feature in the Rock. Brian and Amy Lamm have accepted the responsibility of collecting and submitting “baby & toddler news” to The Rock by the 15th of each month.

PARENTS: Please call or e-mail them to let us know what is happening with YOUR baby. Phone: 815.639.0065 or e-mail lammbk@aim.com or you can email the church office at be-
theden@utcrp.org.



WHO ARE THE BETH EDEN TODDLERS?

William "Will" Todd Vanderheyden was born to Jamie & Khara Vanderheyden on August 20, 2009. Proud grandparents are John & Roxanne Vanderheyden.

Isabelle Star Carlock was born to DC and Pinky Carlock on August 25, 2009. Proud grandparents are Jesse & Elaine McDuell.

Eamonn-Macabe Walter Moluf was born to Jon & Christy Moluf on September 5, 2009.

Molly Jeanette Shipton was born to Maren & Mark Shipton on September 3, 2009. Proud great-grandparents are Norma Shipton and Carol & Tony Kryzaniak,

Dylan Robert Maurer born to Jim & Kelly Maurer on September 9, 2009. Proud grandparents are Brad & Marlise Maurer.

Ruby Amelia Stenger was born to Katie & Matt Stenger, proud grandparents are Gary & Phyllis Flanagan, on September 23, 2009.

Owen Augustus Bethke was born to Lori & Brian Bethke on September 25, 2009. Proud grandparents are Marty & Melissa Riggs.

Harper Anne Vanderheyden was born to Russell & Cari Vanderheyden on September 27, 2009. Proud grandparents are John & Roxanne Vanderheyden.

Logan Garion Everett was born to Dr. Case & Doris Everett on October 10, 2009.

Caleb Reagan Gascoigne was born to Carrie & Sean Gascoigne on February 18, 2010. Proud grandparents are Barb & Chuck Stenger and great-grandparents are Bill & Norma Kitchen.

Liam Brayden Quirk was born to Becky & Kevin Quirk on February 24, 2010. Proud grandparents are Barb & Chuck Stenger and great-grand-parents are Bill & Norma Kitchen.

Adalynn Rose Poonpanich was born to Amanda Gaines & Paul Poonpanich on April 11, 2010. Proud grandmother is Mary Sue Wright.

Isaac Daniel Blachford was born to Pastor Eric & Becky on May 9, 2010.

Samuel Gray Gerard was born to Dan & Rachel Gerard. Proud grandmother is Barbara Barger and great-grandma Anna Lake.

Drake Vernell Wolf was born to Dannie & Cecilia Wolf on June 29, 2010. Proud great-uncle & great-aunt are Jarrod & Sherry Severing.

Cayleb Carl Wolf was born to Dannie & Cecilia Wolf on June 29, 2010. Proud great-uncle & great-aunt are Jarrod & Sherry Severing.

Isaiah Alan Hart was born to Mandy Andrus & Chris Hart on July 2, 2010. Proud Big Sister is Victoria (Tori) Hart. Proud Grandparents are Karen & Ted Andrus.

Noah Thomas Wolf was born to Dustin & Feryn Wolf on July 19, 2010. Proud great-uncle & great-aunt are Jarrod & Sherry Severing.



June 15, 2011

Dear Friends in Mission:

Thank you for your generous gift to United Methodist Committee on Relief. 100 percent of your contribution will go to Japan Emergency (Formally Pacific Emergency), Advance # 3021317 through the Advance, the designated giving channel of The United Methodist Church.

Your gift received on 6/13/11 for \$931.00 is providing emergency relief and long-term recovery support for disaster-affected communities.

Because you gave, UMCOR is able to “Be There” and “Be Hope” on your behalf. UMCOR programs provide food for the hungry, help farmers grow plentiful and nutritious food, and support people left destitute by natural disasters and war. Your gifts go a long way to bring healing and hope to people in need. We give thanks for your generosity.

You can find out more about UMCOR’s work by visiting our website at <http://www.umcor.org>. To receive weekly updates about UMCOR’s work, sign up on our website for the UMCOR Hotline, a weekly email about the latest happenings at UMCOR.

Please let us know if you have questions and/or concerns, we welcome the opportunity to speak with you. The Gift Processing Unit can be reached at 212.870.311. To learn about the Advance, please visit [www://www.advancinghope.org](http://www.advancinghope.org).

This give will bring hope to those who need it most.

Grace and Peace,
Roland Fernandes
General Treasurer
United Methodist Committee on Relief
General Board of Global Ministries

Shawn Bakker
Associate General Secretary
The Advance



To our Friends at Beth Eden,

We'd like to thank our friends at Beth Eden and especially the Prayer Chain for all the prayers, support, and cards you gave David after his rotator cup surgery and our son Steve after he had disc surgery and problems with a pinched nerve caused from the disc. They both are improving each day which is proof God answers our prayers. Thank you for caring and may God Bless.

Love, David, Steve & Muriel Blake

July 12, 2011

Dear Pastor Bowden;

Please accept our sincere gratitude for your congregation's give of \$100.00, received on July 12, 2011, to Lifescape Community Services.

This unexpected gift will help to provide the much-needed services that keep our older citizens healthy and independent. The increasing number of older adults has impacted services provided by Lifescape Community Services and will continue to do so in the next 5, 10, or 20 years. The generosity and commitment of congregations, such as yours, will assist us in insuring that we are all afforded the opportunity to age with independence and quality.

The kindness and generosity of the faith community has been the foundation of Lifescape **Community Services since the early 1940's. Please express our sincere appreciation to all** your members for their commitment to both Lifescape Community Services and the population we serve. Your gift will make a significant difference in the quality of life for the residents of Northern Illinois.

Sincerely,
Alan Jones,
Marketing/Fund Development Director



July 7, 2011

Dear Pastor Bowden and Congregation at Beth Eden:

Your contribution of 112 pounds of food was recently received here at the Rock River Valley Pantry. We are very thankful for your donation as the need is great!

The donated food is being placed in the client grocery bags within 48 hours of receiving it. These grocery bags contain enough food for a minimum of two days and most contain food for three days. The grocery items include food appropriate for breakfast, lunch and dinner. Additionally, much thought is given in the packing of the bags so they are nutritious and meet the caloric needs of the clients. In May this year we assisted 5, 911 individuals, 38% of these individuals were children.

Thank you for your concern for those who are going hungry, and in your confidence in us to respond to those needs. We are very grateful for your support!

Sincerely,
Kim Adams-Bakke
Executive Director

Dear Nurture Committee, Pastors Doug & Eric,

Thank you very much for the graduation card with the inspirational message. I would also like to thank you for the Graduates Book of Promises. I really appreciate it. Thank you for your prayers and support throughout my college years. Thanks again. Take care and God Bless.

Sincerely, Nicole D. Block

Thank you so much for the thoughtful cards you send. Fred enjoys getting them.

Sincerely,
Fred & Carol Alexander

Beth Eden Prayer Circle,

There is no greater power than the power of prayer and we wish to thank you for all of yours. We truly believe it gave Calvin peace at the end of his life's journey.

As Always,
The Spangler Family

GETTING TO KNOW THE MEMBERS OF THE UPON THIS ROCK CO-OPERATIVE PARISH FAMILY

Beth Eden

Bill Kitchen was born into a family of 10 children in Central Wisconsin. A large garden helped provide food for their family. He remembers that there were two acres of cucumbers which they sold. **As he relates it, “We kids broke our necks picking those cucumbers!” He also remembers his mother cooking wild animals in the winter.**

He shares that his favorite “subject” in school was recess when the kids went outside to play softball and at times challenged another one room school playing the game. Today he likes to watch all kinds of sports but doesn’t claim a favorite team.

In World War II he was in a CC Camp which qualified as his first paying job. He also spent two and a one half years in an Army Tank Division.

A Model A Ford was his first car and no doubt was a prized possession.

He and Norma were married on August 27, 1950 in Edgerton, Wisconsin and will celebrate 61 years of marriage this month. Their family has grown to six children, nine grandchildren, and three great grandchildren. In 1956 they moved from North Park, now Machesney Park, to Paradise Blvd., where they soon began attending Beth Eden and became members.

Bill owned and operated a truck for 15 years in which he drove all over the country hauling all kinds of merchandise which might range from a load of eggs to a load of frozen turkeys. His travels took him to all but two of our states.

One of Bill’s hobbies was going to sales with friends and many of us have been the recipients of his generous sharing of treasures. He says his biggest purchase was 50 cartons of candy some of which were given to Beth Eden. With a smile and a wave, Bill has cheerfully and willingly kept the church and parsonage lawns beautifully mowed for many years. Oh yes, he still has room in his garage for the car, but prizes the three lawn mowers in there which he has had for 17 years.

He has been a member of the United Methodist Men and is always a faithful worshiper no matter how difficult it has become to negotiate the stairs. A number of years ago at an outdoor event at Beth Eden, Bill was there with his van and a charcoal grill providing grilled hamburgers for the workers. Perhaps nobody can remember how it came about but they became known as **“Bill’s Possum Burgers”!**

Bill, you are a cherished member our Beth Eden Church Family!

GETTING TO KNOW THE MEMBERS OF THE UPON THIS ROCK CO-OPERATIVE PARISH FAMILY

Evans

Mary Jo McCracken was born in Wisconsin, moved to the Machesney Park area at about age five. **She remembers attending Evan's Sunday School and church in what we refer to as the little white church across the street.**

At a young age she entertained the idea of becoming a nurse, while that didn't come to be, she has given much time to helping others.

A special childhood memory is polka dancing at the grange hall with her grandparents. **Grandma, Pearl Erkfitz words of wisdom for Mary Jo "Be yourself and be true to yourself." Lucille Rost, Mary's mother, was a woman of strong faith; making many occasions special. "She was always there for me."**

Her first employment was as a waitress at Woolworth's lunch counter in the Meadow Mart Mall. She worked 9 years at Rainbow Academy as a cook. After being employed twenty-six years at Blue Cross/Blue Shield, Mary Jo retired!

In 1966, she and Tom were married in Evans UMC. They were blessed with two children, Kristine and Michael. Mary Jo has four granddaughters and one grandson. Mitchael McCracken was confirmed June 12, 2011, with granddaughter Mylee coming up.

Rarely without a book in hand or in purse, reading and fishing (quiet time of reflection) are favorite leisure time pleasures. Mary Jo participates in water walking and various health programs at North Pointe. Mary Jo is an excellent seamstress and crafter. She has entered in as many as twenty-five/thirty categories at the Sandwich County Fair. Yes, she has prize ribbons!

Mary Jo feels the heartbreaking death of her beloved daughter Kris has been life's most devastating and challenging happening. Mary Jo has and is loving and guiding Kris' girls. Ashley and Erica now twenty-one and Jessica a student attending Harlem High School. All grandchildren are involved in the life of the church. Stars in your crown Mary Jo!

GETTING TO KNOW THE MEMBERS OF THE
UPON THIS ROCK CO-OPERATIVE PARISH FAMILY

Harlem

Barb Fisher-Livingston is a great blessing in Harlem Church. Since October 1974, Barb has been in music ministry with us. All these years, Barb has been the one constant presence in Harlem Church. Many pastors have served Harlem Church in the last 37 years. They have all been blessed to work with Barb in leading worship. Pastors Doug and Eric are so grateful for the ministry they share with Barb, in music and worship.

Barb is a native of Ohio. Her music training is at the University of Cincinnati Conservatory **Barb's training and knowledge of music and worship is special. Her preludes, offertories, and postludes are sacred moments in every Harlem service. Barb's directing of the Harlem Choir** inspires us also. Barb welcomes and affirms every choir member, teaching them to sing with joy and enthusiasm. Since our Co-OP ministry began in 2003, Barb has been wonderful in directing and accompanying Co-Op Choirs and playing so well on the keyboard/piano.

Barb is a person of great loyalty. She has chosen to be with Harlem Church, all these years, especially with her Harlem friends. Barb could have played in churches much larger. She choose, feeling God's call, to be with us at Harlem. We are so blessed and so thankful. Thank you, Barb, from all of us in Harlem & in the Co-Op.

Barb also teaches piano to students. Many students, over many years, in our community, have learned to play the piano, as their teacher. Barb loves children, too. She works one day each week in a Rockford preschool.

Barb has a great smile and is lots of fun. When you are with Barb, you laugh a lot and feel so blessed. Barb, thank you for these 37 years of music ministry and friendship in Harlem Church. God bless you, always!!!!!!



Summer Soul-Fest: The Mission Tour

Rebuilding Lives through Music

Our last Summer Soul Fest for 2011

Melodies for Mending | August 21st @ The Sinnissippi Music Shell

Praising the Master Carpenter with Southern Gospel Music featuring the Alleluia and Circle of Friends Quartets

Soul Fest event begins at 6:30 pm

Join us as we enjoy a Variety Show and Southern Gospel Quartet Music to raise funds for three special causes. Free will offerings will be received for our local Rock River Valley food pantries and the Carpenter's Place ministry during our three events.

Have Questions? Call 815.877.9237 and ask for Sherry!



FAITH NIGHT WITH THE ROCKFORD RIVER HAWKS

It's not too late, we still have FREE tickets available for the game on Wednesday, August 3, 2011. They will be playing against the Southern Illinois Miners. Game time is 7:05 pm. To get your tickets you can contact Gary Holmes at 815.654.4920, Jarrod Severing at 815.964.4425, or the Beth Eden Church Office at 815.877.9237. We hope to see you at the game!



Upon This Rock Cooperative Parish

Beth Eden • Evans • Harlem United Methodist Churches
Established: July 1, 2003

8th Anniversary Celebration



Sunday, August 28th

10:00 a.m.

At Beth Eden Church
3201 Huffman Blvd.
Rockford, IL 61103

Potluck to follow



Harlem United Methodist Church

8401 N. Alpine Road -- Machesney Park — 815-633-1450
10:30 a.m. -- Worship Service ■ Monday - 4:00 -- Adult Bible Study

August Dates

Happy Birthday

- 1 - Royanne Turnure
- 4 - Shannon (Dugger) Raczyk
- 4- Ruth Love
- 6 - Stuart Urycki
- 17 - Andrew Massetti
- 19 - Allen Urycki
- 25 - Beula Travis
- 25 - Ginny Larson
- 27 - Gladys Oakey
- 30 - Marlene Hawn

A Happy Belated Birthday to
Linda Morningside
July 24th
She was missed in the July Rock!

Let Us Remember

John Aebersold
7/04/1909 - 8/28/1993

Prayers:

**All the people and friends of Harlem
United Methodist Church**

Many Thanks to the following persons for
helping with Vacation Bible School June
27-30 (Paul & The Underground Church):

Teachers

Alan Hoffman
Grace Jurgens
Carol Holmes
Judy Long
Pastor Doug

Donations:

Rachel Summers
Darlene Pace
Barbara York
Ruth Love
Carol Holmes

Roman Soldier:

Gary Holmes

Power Point:

Gary Holmes

Curriculum:

Beth Eden UMC

Children:

Aaliyah Holmes
Jessie Holmes
Elizabeth Taylor

PRAYER CHAIN UPDATE

From time to time we update the prayer chain. It is that time again. If you are on the prayer chain and want to remain on, or if your phone number is the same and your "best time to call" is the same, you don't need to do anything. If you are not on the prayer chain and want to be, contact Mary Sue. If your phone number has changed, or "best time to call" has changed, call the church secretary at 815-633-1450.

Coordinator
Bernice Hopkins
815-316-6042

Crafters Needed

More crafters are needed for our Craft Show on September 24th. If you--or someone you know--are creative and would like to sell your handmade items, consider joining us. Inside spaces are only \$25.00 -- but they are limited -- Outside spaces are only \$20.00. Call the church for more information or a registration form.

14th Annual Craft Show



Saturday, September 24
10:00 a.m. - 3:00 p.m.



Harlem Church

8401 N. Alpine Road
Machesney Park - (815) 633-1450



Evans United Methodist Church
7605 N. Second Street — Machesney Park, IL
Phone Number — 633-4411
Sunday Worship - 8:30 a.m. ~ Sunday School - 10:15 a.m.

August Dates

Birthdays



6 – Shirley Thompson
9 – Bob Meador
14 – Carol Burnside
19 – Tony Valdez
24 – Nikki Blake
31 – Melissa Campbell

Lectors

August 7 - Helen Dilley
August 14 - David Burnside
August 21 - Nola Loftis



Greeters



Anniversaries

10 - Ron & Helen Dilley
19 - Don & Jane Pershing
23 - Brad & Cindy Drake
24 - Harold & Nola Loftis

August 7 - David & Carol Burnside
August 14 - Harry & Peggy Halberstadt
August 21 - Elizabeth Ellis

8th Anniversary
Co-Op Celebration
August 28
10:00 a.m.

Worship Service
At Beth Eden
Potluck to Follow

Mark Your Calendar and
Join the Celebration

August Ushers
Fred Alexander,
Sue Elliott,
Carol Burnside

In Loving Memory
Carol R. Gibbs
April 3, 1925 - August 4, 2009



AUGUST 2011

Evans United Methodist Church

Sun	Mon	Tue	Wed	Thu	Fri	Sat
<div style="border: 3px double black; padding: 10px; width: fit-content; margin: auto;"> <p><u>Every Sunday</u> 8:30 a.m. Worship Service 10:30 a.m. Adult Sunday School</p> </div>						
	1 PASTOR_____	2 7:00 a.m. Men's Prayer Group DOUG_____	3 ____ON_____	4 5:15 p.m. TOPS Meet 6:00 pm 4th Day Group VACATION__	5 _____	6 _____
7 Holy Communion Guest Pastor will be Pastor Mark Meyers, New Life UMC (Hilltop) PASTOR_____	8 DOUG_____	9 7:00 a.m. Men's Prayer Group ON_____	10 7:00 p.m. Church Council Meeting VACATION__	11 5:15 p.m. TOPS Meeting _____	12 _____	13 7:00 p.m. Star Singles Meet _____
14 PASTOR DOUG VACATION	15 _____	16 7:00 a.m. Men's Prayer Group _____	17 _____	18 5:15 p.m. TOPS Meeting _____	19 _____	20 8:00 a.m. Men's Breakfast & Bible Study (Evans) 10:00 am Wor-ship Summit (Harlem) _____
21 6:30 p.m. summer Soul Fest (Sinnissippi Park)	22 _____	23 7:00 a.m. Men's Prayer Group _____	24 6:00 p.m. Co-Op SPRC 7:15 pm UTRCP Minis-try Team	25 9:30 a.m. Stick-ers & Stuffers @ Beth Eden 5:15 p.m. TOPS Meeting	26 _____	27 7:00 p.m. Star Singles Meet _____
28 10:00 a.m. 8th Co-Op anniversary Worship Service & potluck At Beth Eden	29 _____	30 7:00 a.m. Men's Prayer Group _____	31 PAGE 33			

UPCOMING EVENTS AT AREA CHURCHES



Summerwood Amphitheatre
First Free Church
2223 N. Mulford Rd.
Rockford, IL
815.877.7046



Summerwood 2011

Diamond Rio

Sunday, August 7 @ 7:30 pm

Tickets: \$15 in advance/\$20 day of

Rockford Symphony Orchestra

Sunday, August 21 @ 7:30 pm

Tickets: \$10 in advance/\$15 day of

Tickets available at First Free Church and iTickets.

For more information visit www.summerwood.info

or contact Debbie Evans at

debbiee@firstfreerockford.org

Production & Mailing

“Royal Order of
Stuffers & Stickers”
Published monthly at
Beth Eden UMC
3201 Huffman Blvd.,
Rockford, IL
61103-2941
Postage/fees are paid
in Rockford, IL

Contributors

Pastor Doug
Pastor Eric
Sherry Severing
Mary Sue Wright
Jarrod Severing
Lyle Syverson
Norma Shipton
Kathleen Walker
Gary Holmes
Darlene Scott
Ray Covet
Lisa Jepsen

WALK TO EMMAUS



I Have you thought about taking this Spiritual Journey?

The next Men's Walk is September 15-18, 2011 and

the next Women's Walk is September 22-25, 2011.

Both walks will be at Loyola University Retreat and

Ecology Campus, Woodstock, IL

If you are interested in learning more about the Walk to
Emmaus

you can go to their website at www.nil-emmaus.org

or see anyone who has been on the walk.

It's an experience you don't want to miss!



Upon This Rock Cooperative Ministry
BETH EDEN-HARLEM-EVANS
UNITED METHODIST CHURCHES
3201 HUFFMAN BLVD.
ROCKFORD, IL 61103

“Return Service Requested”

